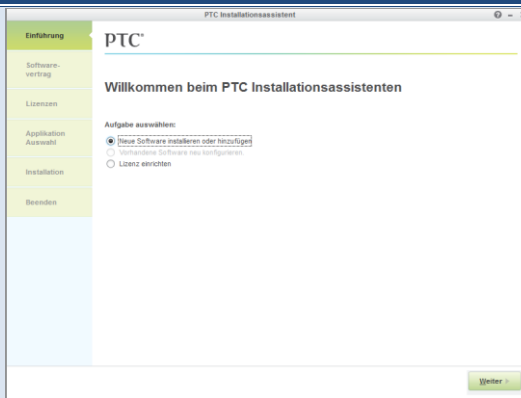


2013

Einrichtung PTC Creo 2.0

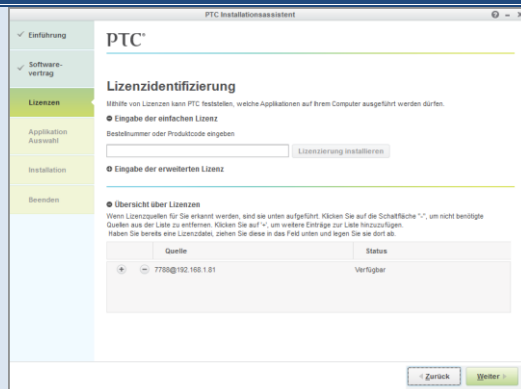


© Dipl.-Ing. (FH) Michael Seelig
Staatliche Studienakademie Riesa
01.09.2013



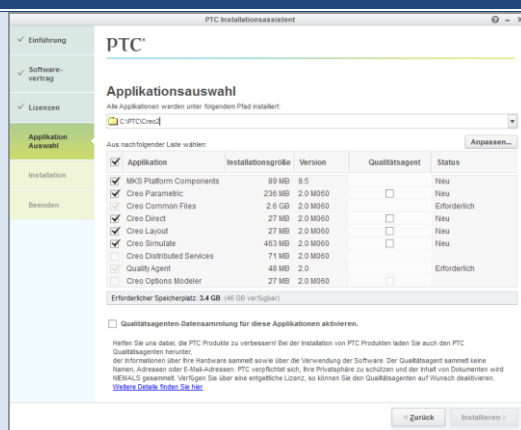
Software verfügbar unter [\\BA-Technik\Studentensoftware\PTC](#)
Creo 2.0

Aufbau einer SSL-VPN-Verbindung
Setup.exe ausführen



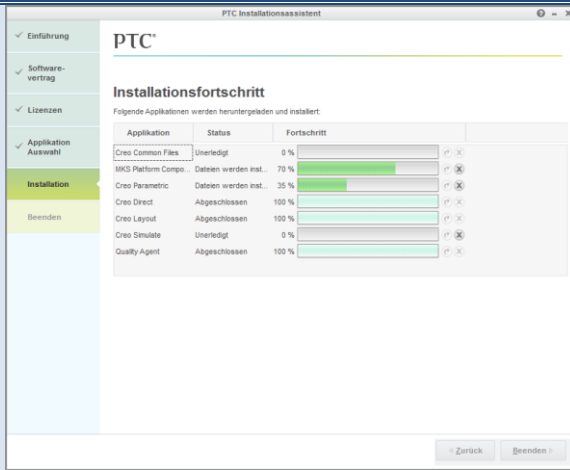
Hinzufügen eines Lizenzservers

7788@192.168.1.81

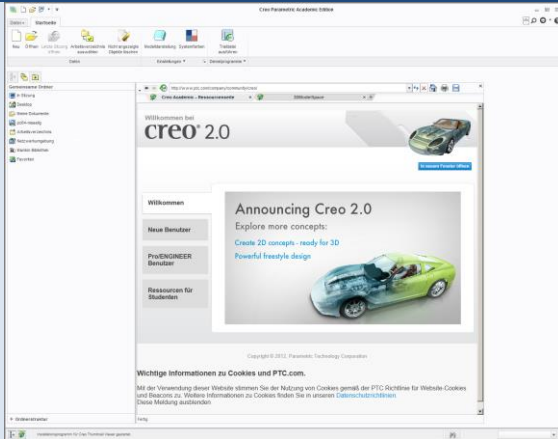


Ändern des Installations-Pfades zu

C:\PTC\Creo2



Bei bestehender SSL-VPN-Verbindung kann PTC/Creo2.0 genutzt werden!

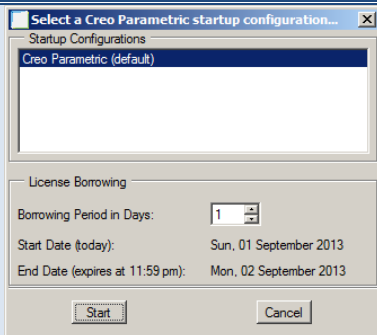


Lizenausleihe:
Im Pfad C:\PTC\Creo2\Creo 2.0\Parametric\bin die Datei ptcborrow.bat editieren

Set lang=usascii einfügen

```

@echo off
set lang=usascii
set MC=usset
if "%PROCESSOR%" == "INTEL_64" set MC=ia64_nt
if "%PROCESSOR%" == "INTEL_486" set MC=i486_nt
if "%PROCESSOR_ARCHITECTURE%" == "IA64" set MC=ia64_nt
if "%PROCESSOR_ARCHITECTURE%" == "AMD64" set MC=x86_winv64
if "%PROCESSOR_ARCHITECTURE%" == "x86" set MC=i486_nt
REM cygwin sets this on 64bit OS
if "%PROCESSOR_ARCHITECTURE%" == "AMD64" set MC=x86_winv64
if not "%MC%" == "usset" goto mc_done
echo ERROR cannot detect what machine type you have.
echo Please make one of the following settings:
echo set PROCESSOR=INTEL_486 - For windows NT Intel based machines.
echo set PROCESSOR=INTEL_64 - For windows Intel Itanium based machines.
echo set PROCESSOR_ARCHITECTURE=AMD64 - For windows AMD 64 based machines.
echo exit
:mc_done
exit
if not "%CREO_DIRECTORY%" == "" goto creset
set APPDIR=%dp0..
set CF=%dp0..\
set PRODIR=%CF%\Common Files\%060
goto pdirset
:creset
set PRODIR=%CREO_DIRECTORY%\Common Files\%060
:pdirset
set PRO_MACHINE_TYPE=%MC%
set start_cmd=start ""
set PRO_DIRECTORY=%PRODIR%
set CREAPP_DIRECTORY=%APPDIR%
if not "%PTCPATH%" == "" goto ptcpathset
set path=%PRO_DIRECTORY%\bin;%path%
set PTCPATH=true
:ptcpathset
  
```



Ausleihdauer auswählen

PTC/Creo 2.0 kann nun ohne SSL-VPN genutzt werden